

Let's make sure every performance ends on a high note.

Great performances deserve a strong supporting cast. Please join us in helping continue to enrich our community. We gladly support the Cumberland Singers.

STOP BY ANY BRANCH
PHONE 1-877-CALL-PNC
VISIT pnc.com



The Cumberland Singers present

Sweet Sound!

Four mini-concerts with the themes of *Angels, Bells, Hallelujahs, and Holiday Songs from the Movies*

Friday, December 14, 2012, 8 PM

Community United Methodist Church
16th and Bridge Streets, New Cumberland, PA



Saturday, December 15, 2012, 7 PM

Enola Emmanuel United Methodist Church
22 Salt Road, Enola, PA



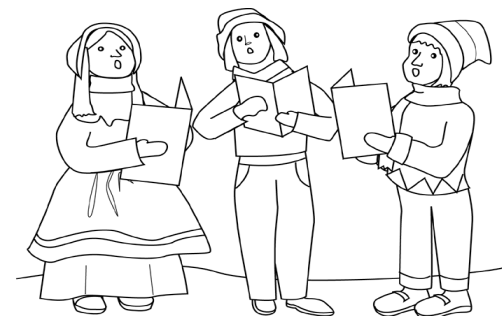
Sunday, December 16, 2012, 3 PM

Shepherdstown United Methodist Church
1924 South York Street, Mechanicsburg, PA



Tuesday, December 18, 2012, 7 PM

Messiah Village Chapel
100 Mount Allen Drive, Mechanicsburg, PA



Directed by Alissa Plant
Accompanied by Harold Plant

www.CumberlandSingers.org



Rite Aid
Proudly
Supports
**Cumberland
Singers**



**Increase Profits
And Improve Your
Bottom Line**

Collection Solutions
Customized To Meet Your Needs
www.commercialacceptance.net • 800.690.3857

CAC
Commercial Acceptance Company
Debt Recovery Consultants

Many thanks to the following sponsors of this season's music:

- Come in from the Firefly Darkness* – Kathy Shreffler
- When the Song of the Angels is Stilled* – Laura Huggins
- Hallelujah* – Annetta Bean
- The Bells of Christmas* – Janée Robinson
- Jingle Bells* – Gina Woods
- I Heard the Bells on Christmas Day* – Sandra Loyer
- Have Yourself a Merry Little Christmas* – Tom Longenecker
- God Bless My Family* – George, Carol and Kim Hollich

Please see the director or email cumberlandsingers@gmail.com for information about sponsoring a song in our spring program.



Chad Reed
 717-991-4720
 HIC# PA092556

Residential and Commercial
 Repair, Maintenance and Improvement

www.cegeneralservices.com

quotes@cegeneralservices.com

SEASONS
 GREETINGS

From Friends of the
 Cumberland Singers

Compliments of BTL



The Camp Hill Bon-Ton is pleased to support the Cumberland Singers with its Community Day fundraising program. For more information, visit www.communitydaysevent.com



15 Central Blvd.
 Camp Hill, PA 17011
 717.697.PETE (7383)



- Central Dauphin Schools
- Townhomes from the \$180's
- Singles and duplexes from the low \$200's

At the base of the blue Mountains in Lower Paxton Twp. featuring 55 acres of open space with bike lanes and nature trails.

DIR: E/Langlotown Road (Rt. 39), L/Colonial Rd, R/Continental Dr, L/Paxton Rd to community on right



- Central Dauphin Schools
- Townhomes from the \$180's
- Single homes from the \$220's

This community offers a wide selection of floor plans, open spaces and is only minutes to downtown Harrisburg.

DIR: I 83 to Union Deposit Rd. East on Union Deposit, R/Newside Rd, R/Page, L/at light onto Chatham Glenn Way



- Cumberland Valley Schools
- New custom homes from the \$230's
- High standards and unlimited choices

New-home community featuring a mix of ranch, cape cod and two-story homes designed around two acres of common area

DIR: I 81 to South on Rt. 114, L/Woods Drive, R/Hamlet Circle



- West Shore Schools (Cedar Cliff HS)
- New custom homes from the \$220's
- Single family or luxury duplex designs

Custom homes designed with old-town flair, situated on treed, curving streets with the area's best views.

DIR: I 83 South to Linsick Rd, L/Linsick Rd, L/Beacon Hill Blvd, L/Lowell Ln, R/Norhampton to Yarmouth Ln.



- Cumberland Valley Schools
- Townhomes from the low \$200's
- Geothermal heating and cooling

Showcased by fresh architectural appointments these eco-friendly homes in Hampden Twp. are convenient to everything.

DIR: I-81 exit 61 (Wertville Rd/Rt 944), east 1/4 mile to L/Valley Rd (at Tech Park light), community entrance 1/2 mile on left.



- East Pennsboro Schools
- Townhomes from the \$170's
- Maximum value, minimum maintenance

Brand-new townhome-style condominiums on a quiet cul-de-sac offering 2 or 3 bedroom plans with basement and garage.

DIR: I 83N, L/944 (Enola Rd), L/W. Locust St, L/Dennis Dr, to R/Briar Ridge Circle.



- Cumberland Valley Schools
- Custom homes from the low \$300's
- Large, level home sites in a quiet setting

Situated in a quiet, central location with Blue Mtn. views Walnut Point defines convenience. Every necessity is nearby.

DIR: I 81 to South on Rt. 114, L/Mulberry Dr, R/Stone Run Dr



- West Shore Schools (Cedar Cliff HS)
- Townhomes from the \$160's
- Convenient to York and Harrisburg

Offering a variety of plans, some with 1st floor masters, all with 1 or 2 car garages. Weatherstone has something for everyone.

DIR: 83 South to Lewisberry Rd, R/Lewisberry Rd (Rt. 114), R/Evergreen Dr, R/Weatherstone Dr.

Learn more, take a tour... www.teampete.com

HESS GARAGE INC

717-766-6821



PA Inspections REPAIRS TOWING

Over 47 Years of Serving You
Hours: Mon-Fri 7am-6pm, Sat 7am-Noon

Elvin Hess 717-766-0231 145 Gettysburg Pike
717-766-6821 Mechanicsburg, PA 17055

ProMed

SERVICES, INC.

Immediate Response To Your Billing Needs
Customized Medical Billing Services
For EMS Providers
866-678-6855
www.promedservices.net



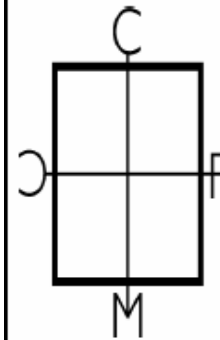
ALL-DAY BRANCH BANKING
COMPETITIVE DEPOSIT & CD RATES
FREE ONLINE AND TELEPHONE BANKING
HOME EQUITY LOANS AND LINES OF CREDIT
PERSONAL SERVICE FOCUSED ON YOUR NEEDS

VISIT OUR LOCAL BRANCHES · ONLINE ANYTIME AT CENTRICBANK.COM · MEMBER FDIC · EQUAL HOUSING LENDER

4320 LINGLESTOWN ROAD
HARRISBURG • 657-7727

1625 MARKET STREET
CAMP HILL • 730-2816

6480 CARLISLE PIKE
MECHANICSBURG • 591-1360



CFMC

INCORPORATED

Jon D. Kirssin

510 Nursery Drive S.
Mechanicsburg, PA 17055
jonkirssin@cs.com

(717) 791-0379
Cell: (717) 497-3132

CAPTIVE FORMATION MANAGEMENT CONSULTATION

Director

Alissa Plant has been performing and teaching music in the Central PA area for over 16 years. She has her degree in elementary education from Messiah College, and she teaches private voice and piano lessons at her home studio in Elizabethtown. She has taught and directed singers of all ages, from young children to senior citizens.



Accompanist

Harold (Skip) Plant has played piano, pipe organ and electronic keyboards professionally for more than forty years. He studied choral composition and vocal music at Utah State University, then pursued a career as a television producer/director with many nationally-distributed performance specials, documentaries, and series on PBS. He is a composer, arranger and performer, and his work experience includes many years as a recording studio chief engineer.



FOR EVERY

NOTE PLAYED....

SONG SUNG....

**We applaud your talent and
appreciate your contribution to
our community**

717.761.6700
1.800.422.3673
www.lbsmith.com
fords@lbsmith.org

L.B. SMITH

 **LINCOLN**

GIANT®

is Proud to support the

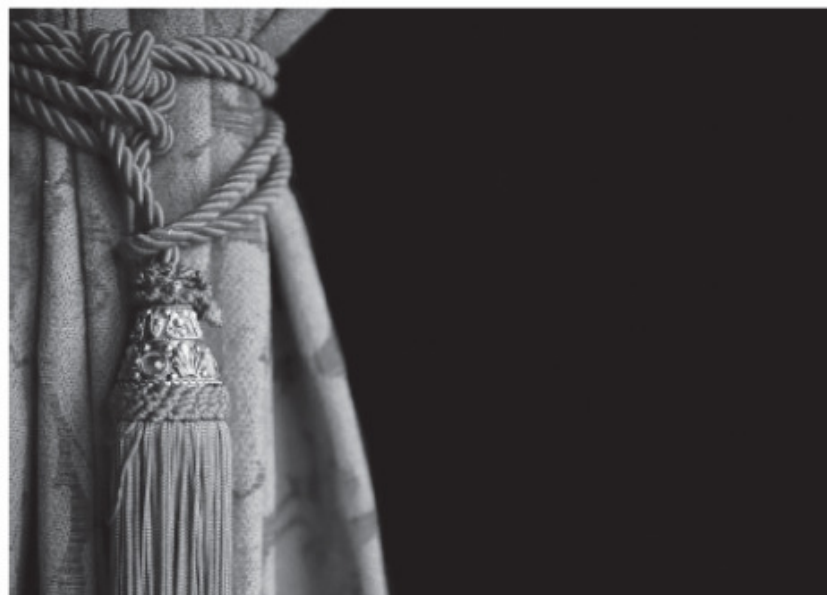
Cumberland Singers



Quality. Selection. Savings. Every Day.
GiantFoodStores.com

WELLS
FARGO

Music joins us together



Whether it's a solo performance or voices joined in song, music is a powerful form of expression. It's an experience we can all share.

The Cumberland Singers, we applaud you.

wellsfargo.com

Together we'll go far



© 2012 Wells Fargo Bank, N.A. All rights reserved. Member FDIC. (711268_04581)

Duncan *DN* Nulph
HEARING ASSOCIATES

Kristen Duncan, Au.D.
Danette Nulph, Au.D.
Doctors of Audiology

5020 Ritter Road, Suite 106
Mechanicsburg, PA 17055-4837

(717) 766-1500 Fax (717) 766-5200
dnhearing@comcast.net



Best of luck to the Cumberland Singers

David S. Baboian, CPA



CAPITAL CITY CROWN & BRIDGE INC.

**3309 SPRING STREET, SUITE 211
HARRISBURG, PA 17109**

TELEPHONE (717) 657-0559



Raymond G. Woods, Jr., CFP®
Senior Vice President - Investments

Wells Fargo Advisors, LLC
Three Lemoyne Drive, 2nd Floor
Lemoyne, PA 17043
Tel 717-761-7344
Fax 717-975-8426
800-468-8685
ray.woods@wfadvisors.com

Member FINRA/SIPC



Snappers offers great food and entertainment in a unique atmosphere. Our menu ranges from awesome sandwiches and appetizers to delicious pastas, steaks, and fresh seafood. The lounge offers a casual setting where smoking is permitted and a seasonal deck which we call Turtle Cove Deck. The dining room provides a family setting where smoking is not permitted. Wherever you may be seated, **Snappers** boasts a full service bar with a variety of wines, beers, and spirits and an experience you will not forget!

(717) 697-9475

www.mechanicsburgrestaurant.com

Susan Larkin Gilius, M.S.
Psychologist

20 Erford Road
Suite 101
Lemoyne, PA 17043

717.730.8555
Fax: 717.730.4566

About the Cumberland Singers

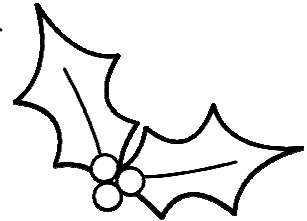
The Cumberland Singers are a non-auditioned community choir, performing each December and spring in various musical styles, including classical, popular, Broadway, jazz, folk, multi-cultural and holiday. We have been enjoying and celebrating music for over thirty years—our original 25 singers first performed on June 19, 1976.

We welcome all singers of any range and ability. The only requirements for joining us are a love of singing, ability to match pitch/carry a tune, willingness to practice and learn parts, and a time commitment to weekly rehearsals and seasonal concerts. The ability to read music is desirable but not required.

The choir rehearses for the holiday concerts from September to December and for the spring concerts from January to April. Rehearsals are on Tuesday nights from 7:00 to 9:15 PM at the Mechanicsburg Middle School.

To help cover our music, staffing and other expenses, singers pay dues at the beginning of each season and are also asked to participate in fundraising activities throughout the season.

We welcome your participation in the Cumberland Singers as a singer or volunteer. Speak with one of us today for more information, or contact us any time at cumberlandsingers@gmail.com.



Discover a world
of handcrafted gifts, decor and jewelry
made by artisans around the world, all fairly traded.



TEN THOUSAND
VILLAGES®

701 Gettysburg Pike
Mechanicsburg, PA 17055

Monday-Friday 10-7 Saturday 10-6
717-796-1474

mechanicsburg.tenthousandvillages.com

in memoriam

Dale M. Miller

1944 - 2012

musician, artist, colleague, friend

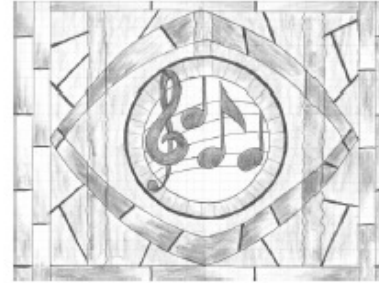
unmistakably proud to support great taste in music



proud to support the
Cumberland Singers

Unmistakably

weis



Sacred Concerts
for Contemporary Listeners
Presents

Requiem

by John Rutter

April 27, 2013

7:30 pm

St. Margaret Mary Church, Harrisburg

April 28, 2013

3:00 pm

Bishop McDevitt High School, Harrisburg

Featuring

Soloist Laurice Simmons Kennel, Opera Delaware

Conducted by Joseph Smith,
Chicago Symphony Chorus

Performing with the combined choirs from Cumberland Singers,
St. Margaret Mary Church, Ridgeway Community Church of the
Brethren, Bishop McDevitt High School Choir, Capitol Opera
Harrisburg, and Holy Name of Jesus Church

Accompanied by the John Eaken Orchestra

A free will offering will be taken at each performance to benefit
the Ecumenical Food Pantry
and the State Street Academy of Music Scholarship Fund.

For more information, call (717) 545-1468

Lawrence Vittone

Reasonable - Experienced
Personalized Guaranteed Service

Piano Tuning
and Service



717-774-0263

723 Elkwood Drive
New Cumberland, PA 17070

Sherry & Company

tues. - thurs. 9am - 8pm
fri. 9am - 4pm sat. 9am - 3pm

5261 Simpson Ferry Road
Mechanicsburg, Pa 17050

717.691.1408

YOUR COMPLETE FLOOR COVERING CENTER

ESSIS & SONS

CARPET
ONE
FLOOR & HOME

ORIENTAL RUGS

ONE OF THE LARGEST
SELECTIONS OF ORIENTAL
RUGS ON THE EAST COAST

Residential & Commercial Carpet
HARDWOODS—LAMINATES—
VINYL—CERAMIC
Oriental Rug Cleaning & Repairing

essisandsongscarpetone.com

717 545-4248	717 697-9423	717 393-2880	717 757-0447	717 624-0062
4637 Jonestown Rd HARRISBURG 17109	6220 Carlisle Pike MECHANICSBURG 17050	1320 Manheim Pike LANCASTER 17601	2808 East Prospect YORK 17402	3185 Carlisle Pk. NEWOXFORD 17350

FAMILY OWNED AND OPERATED SINCE 1942

Pink because
No one should go through breast cancer alone.

Survivors providing hope and inspiration to those on
their breast cancer journey. To request a package,
please contact us at pinkbecause@yahoo.com.

Deluxe Nails Salon

Current offer: 50% off all services
for new customers!

4A W Allen St,
Mechanicsburg, PA 7055

Appointment recommended

(717) 701-7299



Need a 2nd Opinion or a New Vet?
10,111 active clients
can't be wrong. . .

"I began my relationship with Good Hope Animal Hospital over 20 years ago because a friend recommended them. . . I like the way they handle/ talk with my animals, they stay up to date with research and treatments, they take the time to educate me and answer my questions, and they have made customer service a priority." - Gayle Kohr, Enola

"Good Hope has taken care of our animals from adolescence to old age - and has improved their quality of life into their golden years. Our concerns . . . are always discussed in a kind, thoughtful, and respectful manner. We love Good Hope!" - Mary Jo McClain, Mechanicsburg

"Thank you for being so dedicated to the animals. I haven't seen honest care like this in a very long time." - perryricks9, CitySearch Reviews

". . . very caring, compassionate and did not push unnecessary treatments, but were very clear on all options available. I have used Good Hope since moving to the area 8 years ago." - vivianlopez16, Google Reviews

SPECIAL OFFER

prepared especially for those seeking
a 2nd Opinion or a New Veterinarian.

Discover it right now at . . .

www.GoodHopeAnimalHospital.com/Offer
(Or call us for details: 717-766-5535)



WHERE LITTLE PAWS MEET TRUSTED HANDS
6108 Carlisle Pike, Mechanicsburg | 717-766-5535

A Full Service Medical & Surgical Facility for Dogs, Cats & Pocket Pets

MERRY CHRISTMAS

from the tenor section



**T
E
N
O
R
S**

Bob Fake

Frank Fisher

Ron Flory

Tom Longenecker

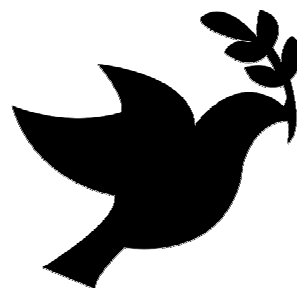
Russ Matthews

Hershey Bears

The Cumberland Singers are excited to be singing the national anthem at the Hershey Bears hockey game on Saturday, March 16, 2013. The game will also be a fundraiser for us—you can use the form on the other side of this page to order tickets. We hope to see you there. Thanks for your support!



Spring 2013



Next season's Cumberland Singers program is entitled *Deep Peace*, and will include a variety of music—two movements from John Rutter's *Requiem*, along with folk songs, gospel, Broadway and contemporary choral music. Concert dates are April 12, 13, 14 and 16.

As always, we welcome new singers and audience members. For membership and concert information, visit our website.

www.CumberlandSingers.org



Hershey Bears Hockey
Fundraising Order Form



Proceeds benefit the Cumberland Singers
PO Box 963, Mechanicsburg, PA 17055

GAME INFORMATION

Game date: Saturday, March 16, 2013
Game time: 7:00 PM
Opponent: Bridgeport Sound Tigers

Please complete the form below and return to the address above or to a member of the Cumberland Singers. Thanks for your support!

Order due date: February 5, 2013

Name: _____ Phone: _____

Email: _____ Address: _____

Choir contact: _____

TICKET ORDER

Number of tickets Price Each Total Price

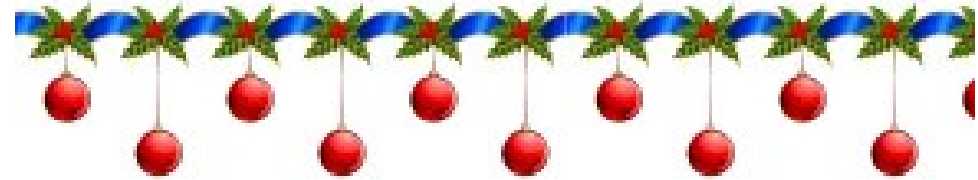
100 Level Seats		\$22.50	
200 Level Seats		\$16.50	
		Grand Total:	

Please make checks payable to *The Cumberland Singers*.

Questions? Contact us at cumberlandsingers@gmail.com.

For information about the Cumberland Singers visit
www.cumberlandsingers.org.

Singers and Board of Directors



Sopranos

Julia Beam
Annetta Bean
Amy Braun
Lori Clelan
Adeline Gaydosh
Bonnie Golla
Kim Hollich
Laura Huggins
Mandy Marcozzi
Emily Matthews
Miriam McMechen
Lennie Nyman
Jenna Raniowski
Emily Reed
Susan Rhone
Janée Robinson
Karen Steinmeier
LaDonna Tarpley
Roxann Todt
Karen Vittone
Jen Ward

Altos

Kat Anderson
Cathy Brommer
Marilyn Chastek
Lydia Clelan
Kaila Evans
Susan Gilius
Sharon Heiner
Ashley Hoffman
Margaret Hope
Anmarie Jezorski
CJ Longenecker
Sandra Loyer
Paulette Matthews
Andrea McKenna
Tina Moyer
Linda Schlosser
Kathy Schreffler
Tina Stauffer
Barb Ward
Gina Woods

Tenors

Bob Fake
Frank Fisher
Ron Flory
Tom Longenecker
Russell Matthews

Basses

Ed Bittner
Jim Brommer
Nathan Crowther
Jonathan Evans
Dave Feath
Jim Morris
Jim Nagy
Terry Shope
John Succa
Richard Watson

Board of Directors

CJ Longenecker, President
Becky Noll, Vice President
Karen Steinmeier, Treasurer
Kaila Evans, Secretary
Emily Reed, Fundraising Chair
Kat Anderson, Public Relations Chair



Karns Quality Foods

is Proud to Support the
Cumberland Singers!



Find the best meat
prices in Central PA
at [KarnsFoods.com!](http://KarnsFoods.com)

Would you like *your* advertisement to be
featured in our next season?

Email us for more information at:

cumberlandsingers@gmail.com



Heather Zielonis
"Queen of Print"

406 Brandy Lane, Suite B
Mechanicsburg, PA 17055
phone: (717) 697-3835
fax: (717) 697-3837

www.integrainprint.us
heather@integrainprint.us



HARRISBURG BICYCLE CLUB

Come ride with us! www.harrisburgbicycleclub.org



Locally grown

Wegmans

6416 Carlisle Pike, Ste 2000
Mechanicsburg, PA 17050
(717) 791-4500 • wegmans.com

West Shore Family Dentistry

THOMAS N. GENSBIGLER, D.M.D.

DR. THOMAS GENSBIGLER

DR. JOSEPH GENSBIGLER

DR. PETER YELK



40 N. 36TH STREET, CAMP HILL, PA 17011
TELEPHONE (717) 737-4321

OPEN 7 DAYS

Early as 7:30 • Late as 8:00

**METRO
BANK**

mymetrobank.com • 888.937.0004

Member
FDIC

*Origami Owl
Custom Jewelry
Paulette Matthews,
Independent
Designer*

*paulette.matthews@
gmail.com*

*www.paulettematthews.
origamiowl.com*



Congratulations and
Best Wishes to the
Cumberland
Singers

MAGARO'S

**Auto Sales
Towing**

705 Tower Road
Enola, PA 17025
(717) 732-6969
EMERGENCY 732-3411

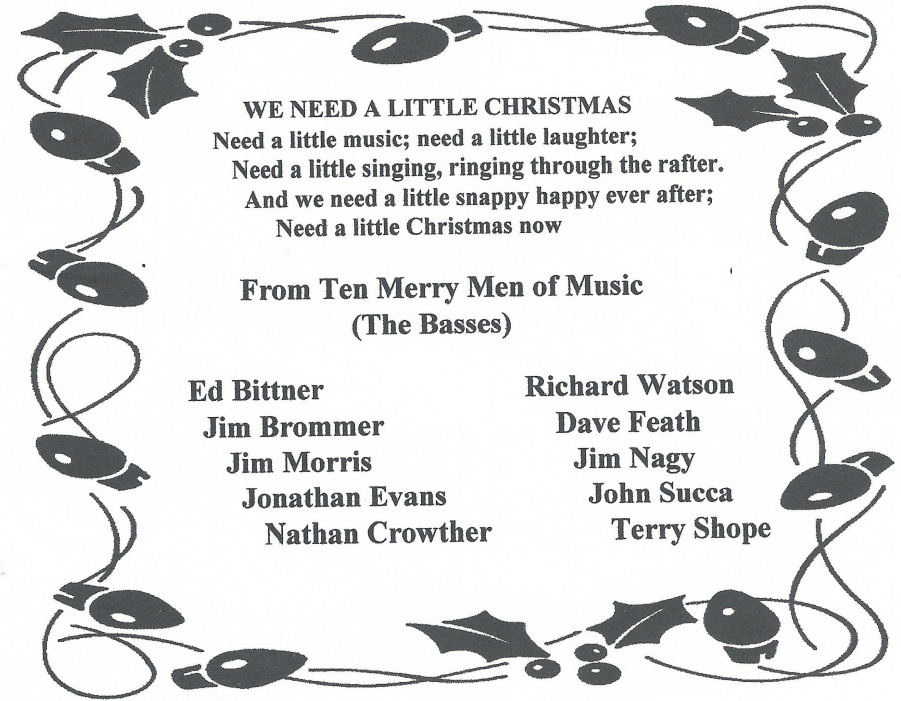
**Auto Body Repair
General Auto Repair**



Then cruise to *Kristy's Whistle Stop*
for fun family 50's atmosphere!

Open May 1st to September 30!

600 S. Enola Road, Rtes 11 & 15
Enola, PA 909-3881



WE NEED A LITTLE CHRISTMAS

Need a little music; need a little laughter;
Need a little singing, ringing through the rafter.
And we need a little snappy happy ever after;
Need a little Christmas now

**From Ten Merry Men of Music
(The Basses)**

Ed Bittner

Jim Brommer

Jim Morris

Jonathan Evans

Nathan Crowther

Richard Watson

Dave Feath

Jim Nagy

John Succa

Terry Shope



MUSSELMAN

**FUNERAL AND CREMATION
SERVICES**

Professional

Compassionate

Personal

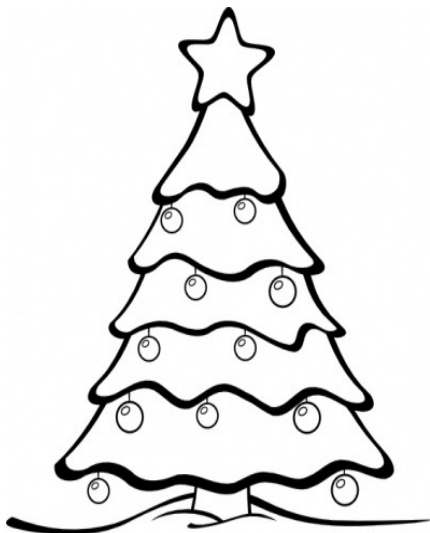
Brian C. Musselman, Supr.

324 Hummel Avenue, Lemoyne, PA 17043
717-763-7440, www.MusselmanFuneral.com

Program

We Need a Little Christmas Jerry Herman, arr. Anita Kerr
In the musical *Mame*, this song is sung after the main character loses her fortune in the stock market crash of 1929. The characters “need a little Christmas” to cheer them up.

For numerous and varied reasons, this year has been a melancholy one for many of us in the Cumberland Singers. Our closing piece reflects the sadness we all feel sometimes during the holiday season remembering people and events past, but it also celebrates the joy of families – the ones we are born into and the ones we choose. Thank you for being part of the Cumberland Singers family, and we hope you will join us for many seasons of concerts to come!



God Bless My Family Ann Hampton Callaway, arr. Mac Huff
Solo: Anmarie Jezorski

Thank you for attending our concert! We hope you enjoyed the music, and we invite you to stay for a reception after the concert.



Program

Come in from the Firefly Darkness Amy F. Bernon
Welcome to our concert! Our opening song describes how we feel at the start of a new season of singing – it’s so much fun to see everyone and start making music together again!

Our program today is comprised of 4 mini-concerts, each with its own theme. Our first theme is *Angels*.

And the Angels Came to Sing Sally deFord, arr. Harold Plant
Dear audience members, you are the angels today. Please join us in singing two favorite Christmas carols, in between verses of a sweetly-told nativity story.

Hark! The herald angels sing, “Glory to the newborn King.”
Peace on earth and mercy mild, God and sinners reconciled.
Joyful all ye nations rise; join the triumph of the skies.
With th’angelic host proclaim, Christ is born in Bethlehem!
Hark! The herald angels sing, “Glory to the newborn King.”

Gloria, in excelsis Deo! Gloria, in excelsis Deo!
Come to Bethlehem and see him whose birth the angels sing.
Come adore on bended knee Christ the Lord, the newborn King.
Gloria, in excelsis Deo! Gloria, in excelsis Deo!



When the Song of the Angels is Stilled
Elizabeth Alexander

Listen carefully to the words of this poem by Howard Thurman, which entreat us to keep the spirit of kindness and reconciliation alive even after the holiday season is over. “When the song of the angels is stilled, the work of Christmas begins.”

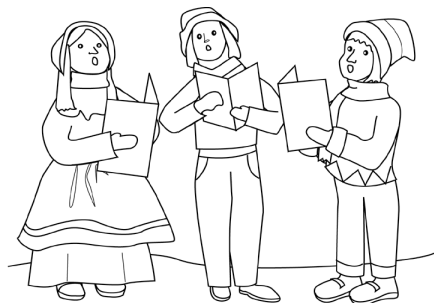
Program

Our second theme is *Hallelujah*. Three more different treatments of this word could hardly be found! Randall Thompson and Leonard Cohen, though they composed two very different pieces of music, had some similar ideas about the word *hallelujah*. Randall Thompson originally was tasked with composing a festive fanfare, but instead he chose a somewhat sad interpretation, with the book of Job and current context of World War II as inspiration for the music. Leonard Cohen's view of the word and its many possible interpretations is reflected in the fact that he penned over 80 verses for the song. Though the last piece in this set depicts the most common joyful *hallelujah*, the first two pieces evoke an array of emotions.

Alleluia Randall Thompson
This introspective and beautiful piece of music was composed in 1940 as a commissioned piece for the opening of the Berkshire Music Center at Tanglewood, and has been a standard for choirs ever since.

Hallelujah Leonard Cohen, arr. Roger Emerson
In addition to being the most-requested song by the Cumberland Singers over the past several years, Leonard Cohen's *Hallelujah* has been performed all over the world and covered by dozens of recording artists.
Solo: Ed Bittner

The Storm is Passing Over Charles Albert Tindley
arr. Barbara W. Baker
We have enjoyed singing in this traditional gospel style, and we hope you will love it, too.



Intermission

Program

Our third theme is *Bells* – a Celtic lullaby, an out-of-the-ordinary Jingle Bells, and a beautiful hymn.



Bells of Christmas John Betts and Dan Shea
Arr. Keith Christopher
Duets: Amy Braun and Lydia Clelan, Kim Hollich and Kat Anderson

Jingle Bells J. Pierpont, arr. Audrey Snyder

I Heard the Bells on Christmas Day Johnny Marks
arr. Lloyd Larson
Words by Henry Wadsworth Longfellow

Our final theme is *Music from the Movies*. These are fun and upbeat ones to sing and hear, but there's a bit of melancholy running through these songs.

Grinch! A Christmas Choral Medley arr. Andy Beck
Welcome Christmas
You're a Mean One, Mr. Grinch
Music by Albert Hague, Words by Dr. Seuss
Solo: Jim Nagy

Have Yourself a Merry Little Christmas Hugh Martin and Ralph Blane
arr. Mark Hayes

This one is at once hopeful and sad, though our version has cheerier lyrics than the original, whose lines included, "No good times like the olden days" and "From now on, we'll have to muddle through somehow."

Solo: Ron Flory