

It takes more than just
a few people to raise
a curtain.

Great performances need a great
supporting cast. Please join PNC in
supporting the efforts of The Cumberland
Singers. Best wishes for a great concert!



Member FDIC

www.pncbank.com

The Cumberland Singers present

Sing We Now of Christmas



Tuesday, December 5, 2006 - 7:30 PM

Messiah Village, Mechanicsburg

Friday, December 8, 2006 - 8:00 PM

St. Peter's Lutheran Church, Middletown

Saturday, December 9, 2006 - 7:00 PM

Charlton United Methodist Church, Paxtonia

Sunday, December 10, 2006 - 3:00 PM

Shepherdstown United Methodist Church, Mechanicsburg

Sean Hackett, Artistic Director

Lindy Mack, Accompanist

www.CumberlandSingers.org



New Horizons of Harrisburg
5095 Ritter Road, Suite 114
Mechanicsburg, PA 17055

7:30 - Running with Marty
9:00-12:00 - Replace RAM controller
12:00 - Lunch with Donna
12:30 - Installing SSD, Server 2009 Class
2:00-4:00 - Meet w/ hardware vendor
4:30 - Monitor usage queries
5:30 - See tape library demo
6:30 - Managing SQL Server Security Class

it's your time.



Focused learning. One-on-one mentoring. Flexible Scheduling.
New Horizons Mentored Learning program puts time back in your hands. Flexible course schedules allow you to acquire valued new skills around your daily schedule. Certified instructors are available to lead you through a variety of programs at your own pace. With Mentored Learning at New Horizons, you can do more than make your schedule, you can keep it.
Stay productive, stay in charge.



717-791-0200 | www.nhharrisburg.com



Happy Holidays from the Cumberland Singers!

Special Thanks to:

- Ed Bittner for your hard work and continuing support of the choir. We miss your voice!
- The owners of our concert venues and rehearsal spaces for giving us a home
- Our singers and board members, and their families, for giving their time and talents
- YOU, the audience, for your attendance at our concerts—we could not exist without you!

The printing of this concert program was donated by Xerox Corporation.

The Cumberland Singers sincerely thank Xerox for their generous support of our 2006 Holiday Season.

XEROX®

Technology | Document Management | Consulting Services

About the Cumberland Singers

The Cumberland Singers are a non-auditioned community choir, performing each Christmas and spring season in varied musical styles, including classical, popular, Broadway, jazz, folk, multi-cultural and holiday. We have been enjoying and celebrating music for over thirty years—our original 25 singers first performed on June 19, 1976.

We welcome all singers of any range and ability. The only requirements for joining us are a love of singing, willingness to practice and learn parts, and a time commitment to weekly rehearsals and seasonal concerts. The ability to read music is desirable but not necessary.

The choir rehearses for the holiday concerts from September to December and for the spring concerts from January to April. Rehearsals are on Tuesday nights from 7:00 to 9:15 PM at the Mechanicsburg Middle School.

To help cover our music and staffing expenses, Cumberland Singers members pay dues at the beginning of each season. Members are also asked to participate in fundraising activities throughout the season.

If you are interested in singing with us, please talk to any singer at this concert, or just join us for a rehearsal at the beginning of next season. For details, visit www.CumberlandSingers.org. If you are interested in participating in the Cumberland Singers, but you are not a singer, we can always use board members and volunteers. Just fill out the form near the back of this program booklet and hand it to any singer.

Lawrence Vittone

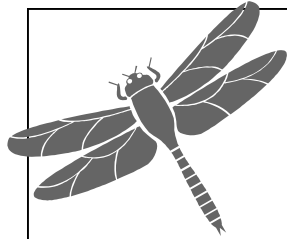
*Piano Tuning
and Service*



*Reasonable - Experienced
Personalized Guaranteed Service*

717-774-0263

723 Elkwood Drive
New Cumberland, PA 17070



**Beginner Voice and Piano
Lessons**

for Adults and Children



Contact Alissa for a free trial lesson: 717-367-8030 or imamezzo@aol.com

Visit www.divadea.com for details.

**Please support our
generous sponsors!**

Many local businesses and service providers have chosen to support the arts in their local community by advertising in this season's Cumberland Singers program booklet. Please support our sponsors by patronizing these businesses—and tell them you saw their ad in our program. Together, we can keep choral music in central PA alive and vibrant!



Your Ad Here

The Cumberland Singers rely on the financial support of singers, community members, and advertisers to pay for operating expenses, including sheet music and salaries for director and accompanist. If you would like to place an advertisement, message, or coupon for yourself your business in next season's program, please fill out the form below, and hand it to any singer, or mail it to Alissa Plant, 27 Rhema Court, Elizabethtown, PA 17022. Thanks for your support!

__I would like someone to contact me about my ad. Here's my contact information:_____.

__Here's my payment of (circle one) \$10 (line ad), \$25 (quarter page), \$50 (half page), \$100 (full page). (Please attach business card or ad copy to this sheet—or send electronically to imamezzo@aol.com.)

I would like to __sing __volunteer with the Cumberland Singers. Please contact me: _____

Questions? Email imamezzo@aol.com or call 367-8030.

ProMed

SERVICES, INC.

Immediate Response To Your Billing Needs
Customized Medical Billing Services
For EMS Providers
866-678-6855
www.promedservices.net



Ameriprise Financial Services, Inc.
Suite 201
5006 E. Trindle Road
Mechanicsburg, PA 17050
Bus: 717.448.7240
Fax: 717.441.4808
lynda.l.brittain@ampf.com

Lynda L. Brittain, ChFC®
Financial Advisor
Chartered Financial Consultant

See reverse for
PIZZA TOWN USA
coupon



**115 Cumberland Parkway
Mechanicsburg, PA 17055
Phone: 717-795-2779**

**Office Hours:
Monday - Friday 9a.m. to 6p.m.
Saturday 9a.m. to 4p.m.**

We store music for the Cumberland Singers!



Cumberland Singers, Spring 2007

Join us for singing and fun!

Rehearsals start on Tuesday, January 9, 2007, at the Mechanicsburg Middle School.

Concerts are scheduled for April 13, 14 and 15, 2007.



Violin Instruction

- Beginner to advanced
- Certified Suzuki instructor
- 30 years experience

Barbara Owen

717-566-7118

barbowen@paonline.com

*Merry Christmas,
Cumberland Singers*



from your friends

Miriam and Steph

Scott A. Smith

Director of Government
& Dealer Sales

TRAILER SUPERSTORE

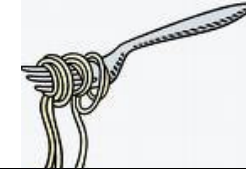


6799 Carlisle Pike, Mechanicsburg, PA 17050

717-795-9116 FAX: 717-795-0546 1-800-622-7003

Cell: 7117-648-2897 Email: ssmith4195@comcast.net

www.allprowest.com



NONNA'S

DELISIOSO!

Phone: 232-6150 | Fax: 232-6175 | The Broad Street Market | Harrisburg, PA

PIZZA TOWN USA

2 Pine Tree Drive, Mechanicsburg, PA 17055
(off route 114, across from Zimmerman's Auto Service)

2 Large Pizzas, 1 Topping—\$14.99 with this AD!

691-6733



Cumberland Singers members also perform with other central PA music ensembles. Here are some upcoming events:

We3's Schedule (www.we3pa.com):

- Friday, 1/13/06, Little Coffeehouse, Camp Hill, 8 PM
- Saturday, 1/20/06, Fort Hunter Barn Coffeehouse, Harrisburg, PA, 7 PM

Marmalade's Schedule (www.marmaladies.com):

- Friday, 12/15/06, St. Thomas Roasters, Cedar Cliff, 8 PM
- Saturday, 12/16/06, True Espresso, Mountville, 7:30 PM

About Our Director

This is Sean Hackett's sixth season as director of the Cumberland Singers. He graduated from Lebanon Valley College with a degree in music education and received his master's degree in vocal performance from West Chester University.

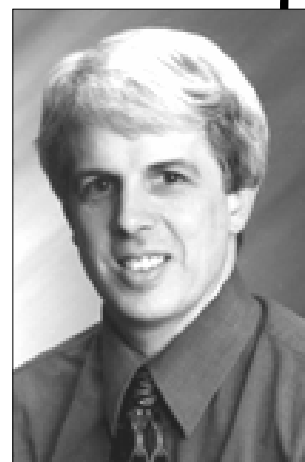
Since 1994, Sean has taught vocal music at Conrad Weiser High School, where he conducts a 150-member chorus and a 24-member chamber choir. He directs a folk mass at St. Luke's Episcopal Church in Lebanon and teaches music theory with Suzuki Strings of Lebanon. He regularly serves as an adjunct professor of music at Alvernia College and a cooperating teacher for Lebanon Valley College.



About Our Accompanist

Lindy Mack has been providing the piano accompaniment for the Cumberland Singers since 2001. He has been performing and recording since 1975.

He has a degree in piano performance from California State University, Hayward, and his experiences have taken him to various parts of the U.S. and internationally. His music career includes performances and recordings with the California groups The Magic Flute, the Jeannine Carol Project, Jupiter II, Memorabilia and Ally. Lindy also plays the altos sax with the New Singer Band of Mechanicsburg and performs on keyboard and vocals with the local group We3.



**Increase Profits
And Improve Your
Bottom Line**

Collection Solutions
Customized To Meet Your Needs

www.commercialacceptance.net • 800.690.3857



Commercial Acceptance Company
Accounts Receivable Management

The Cumberland Singers wish to sincerely thank the following people and businesses for their support at this year's Mechanicsburg Jubilee Day.



Shop the Chef!

Hours:

Monday-Wednesday 7:30-5:00
Thursday and Friday 7:30-6:00
Saturday 7:30-3:30

308 Cheryl Avenue
Mechanicsburg, PA 17055
717-918-0138 or 717-918-0139
www.jgrossco.com



Becky Yost
3425 Market Street
Camp Hill, PA 17011

www.beckyyost.com



Office: (717) 730-5591
1-888-761-6300
Home: (717) 697-8235
Fax: (717) 697-4590



3805 Hartzdale Drive
Camp Hill, PA 17011

Hours: Monday-Saturday 8:00-10:00
Sunday 8:00-9:00

717-763-9550

www.bjs.com



CET Engineering Services

Steven C. Huntzinger, QEP
SENIOR PROJECT MANAGER

1240 N. Mountain Rd. • Harrisburg, PA 17112
717-541-0622 • Fax 717-541-8004



Music in the People's Key

Russ · Paulette · Lindy

Phone: 319-0349 or 691-6363
Email: we3@amnesia-music.com
Web: www.we3pa.com




Specializing in:
X-Ray
Ultrasonography
EKG

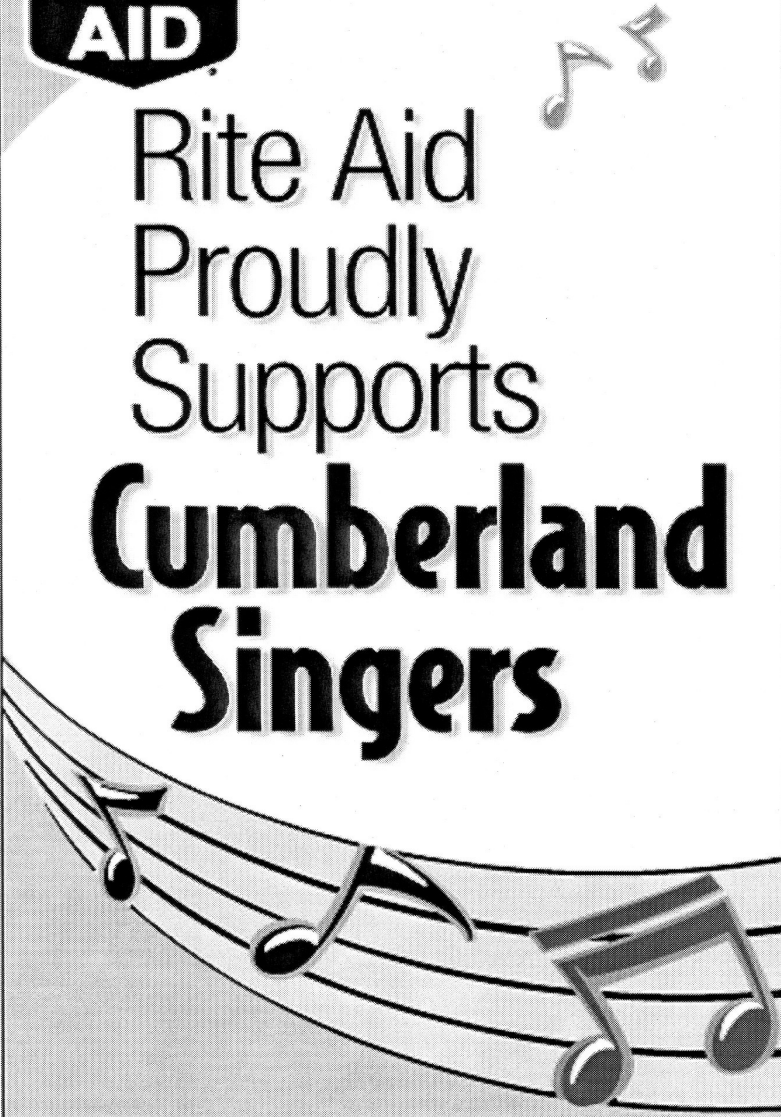
TODD GELBAUGH R.T. (R)
PRESIDENT

5120 Lancaster Street
Harrisburg, PA 17111
(717) 561-4940, Ext. 10
1-800-420-XRAY (in PA)
FAX: (717) 561-4467
Cell: (717) 645-0564

"Quality Service Doesn't Cost—It Pays"



Rite Aid
Proudly
Supports
**Cumberland
Singers**



Pennsylvania State Bank

- ▲ **Camp Hill**
(717) 920-3241
- ▲ **Carlisle**
(717) 243-3189
- ▲ **Colonial Park**
(717) 541-0500
- ▲ **East Pennsboro**
(717) 703-2800
- ▲ **Cumberland Parkway**
(717) 795-7200
- ▲ **West Hanover**
(717) 920-9900

www.pastatebank.com

MEMBER FDIC
Equal Housing Lender

Patrons

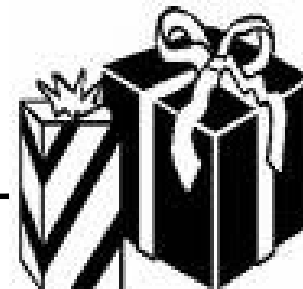
Janet B. Filardo

Kate Kauffman

Trudy and Allan Oesterreich

Happy Holidays to old friends!

from Walt and Andrea Shirk





SERVING INDIVIDUALS, BUSINESS, BANKING AND
COMMERCE



PO Box 88
Harrisburg, PA 17108
Phone: 717.763.1121
Fax: 717.763.7419

40 West Chesapeake Avenue
Towson, MD 21204
Phone: 410.825.5223
Fax: 410.825.5426
State College: 814.234.3211
www.shumakerwilliams.com
mail@shumakerwilliams.com

135 North George Street
York, PA 17401
Phone: 717.848.5134
Fax: 717.848.5125

GIANT
Quality. Selection. Savings. Every Day.

Proud to support the
**Cumberland
Singers**



Visit us on the web at GiantFoodStores.com



Kelly Morrison
Direct Dial: (717) 591-0620
Cell: (717) 448-2862
kelly.morrison@jgr.com
www.jgr.com/kelly.morrison



**101 Old Schoolhouse Lane
Mechanicsburg, PA 17055
(717) 697-4673
FAX: (717) 697-0822**



Marsha Wood
Direct Dial: (717) 591-0624
Cell: (717) 903-4537
marsha.wood@jgr.com
www.jgr.com/marsha.wood



Referrals are our business. Who do
you know who may be looking to
buy or sell a home? We can help!

BUYERS HOME INSPECTION COUPON

**FREE BUYERS HOME INSPECTION UP TO \$275 WHEN YOU
PURCHASE YOUR NEW HOME THROUGH KELLY OR MARSHA.
DOES NOT INCLUDE WOOD INFESTATION.**

CONTACT US TODAY TO DISCUSS CONTRACTING WITH US
TO HELP YOU BUY YOUR NEW HOME!
COUPON EXPIRES 07/07/07

HOME WARRANTY COUPON

**FREE BUYERS HOME WARRANTY UP TO \$425 WHEN YOU LIST
YOUR HOME WITH EITHER KELLY OR MARSHA. WARRANTY WILL
COVER THE SELLER DURING THE LISTING PERIOD FOR A MINIMUM
LISTING PERIOD OF 6 MONTHS. CONTACT KELLY OR MARSHA TO
FIND OUT WHAT THE WARRANTY WILL COVER.**

COUPON EXPIRES 07/07/07



**RAUDENBUSH
ENGINEERING, INC**

**Civil · Structural · Environmental · Surveying
Transportation · Landscape Architecture**

29 SOUTH UNION STREET
MIDDLETOWN, PA 17057

PHONE: 717.944.0883
www.RAUDENG.com



(717) 732-2222
Fax: (717) 732-9811

DR. MICHAEL G. BENNESE

433 North Enola Road
Summerdale Plaza
Enola, PA 17025

www.bennesefamilychiro.com

Kim Holloway
Senior Loan Officer
5235 Westview Drive
Suite 102
Frederick, MD 21702
Office: (800) 225-2647 x 4920
Fax: (301) 663-4329
Cell: (301) 676-0016

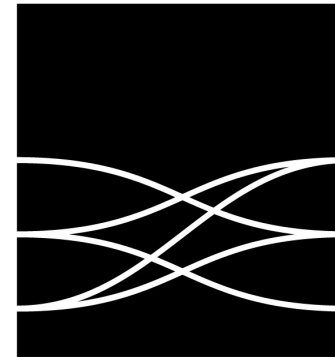
Email: kim.holloway@ncmc.com

www.nationalcitymortgage.com/KimHolloway

National City®

Mortgage

A division of National City Bank of Indiana



WACHOVIA



Thank you for your attendance.

Happy Holidays!

The Basses

Congratulations, Cumberland Singers!

PRO Barrier
Engineering LLC

Advancing the science of anti-terrorism vehicle access control

www.probarrier.com

717-566-9347

Director's Note

Once upon a time in music history, sometime between "Psallite" and "Dance of the Sugar Plum Fairy," as instrumental music was well into its effort to unseat vocal music as the dominant musical entity, there arose a controversy around the concept of equal temperament that only a musicologist could love. The details are rooted in physics that are beyond the comprehension of your average music teacher, but the gist is that instruments are tuned not to perfection, but to a compromise. To perfectly tune certain notes in certain keys makes them unlistenable in other keys. There is a joke that says harpsichord players spend half of their time tuning, and the other half playing out of tune. Imagine if keyboard instruments had to be re-tuned for each key or even for specific chords within a key.

Most of us can enjoy piano music without noticing that it is not really in tune. The reason to know about any of this is to recognize that music is, even at its primal physics level, a series of compromises. Just as we are constantly in search of the tipping point between energetic and harsh, between soothing and dull, between lively and out of control, we are also working in a system where F# means different things in different keys.

It is possible, with the wealth of artistic offerings in the world, to only experience music exactly tailored to one's specific tastes. A person could fill their iPod with only Vivaldi concertos, and only those performed on period instruments, and only ones played by Italian performers. You chose instead to be here with us, which means that you are willing to explore music that is more evenly distributed across the spectrum. While you may not enjoy all of the selections in tonight's concert equally, perhaps you will enjoy one of them perfectly.



JUDI KOPPENHAVER
Office Manager

945 EAST PARK DRIVE | SUITE 201 | HARRISBURG, PA 17111
TEL: 717.561.1967 | FAX: 717.561.0481
EMAIL: JUDI@SZELESRE.COM



Translations

Psallite

Psallite unigenito	Sing your psalms to Christ,
Christo, Dei Filio,	The begotten Son of God,
Psallite Redemptori,	Sing your psalms to the Redeemer,
Domino, puerulo	To the Lord, the little Child
Jacenti in praesepio.	Lying in a manger bed.
Ein kleines Kindelein leigt in dem	A small Child lies in the manger.
Krippelein.	All the blessed angels fall before
Alle lieben Engelein dienen dem	Him and sing.
Kindelein	Sing...
Und singen ihm fein.	
Psallite unigenito...	

Friendly. But you'll get used to it.

Banking isn't just numbers, figures, and percentage points. It's about people. So when your transaction involves a smile or a friendly hello, don't let it startle you. In fact, every time you come in, whether to deposit a check or transfer money, you can expect it. It's just the way we do business. People first. Banking second. After all, we think you deserve it.



שלום

Ose Shalom

Ose shalom bimromav	The One who makes peace in the
Hu ya'ase shalom aleynu	heavens,
Veh'al kol Yisrael	(may) He make peace for us,
Veh'imru, imru amen.	And for all Israel,
	And let us say, let us say Amen.

Compliments of
Ber-Penn, Inc.
Consultants
and
Administrators

SEASON'S
GREETINGS

BTL Associates, Inc.



Good luck, Dad!

We love you.

Have a great concert.

Love,

Morgan &
Sophie



Robin Prifer

3808 Old Gettysburg Road · Camp Hill, PA 17011

717-975-9244

(717) 697-8157
FAX (717) 697-4959



**FLOYD'S
GARAGE**

FLOYD FREEMAN
Owner

18 GETTYSBURG PIKE
MECHANICSBURG, PA 17055

Translations

Riu, Riu Chiu

Riu, riu chiu, la guarda ribera,
Dios guardo el lobo de nuestra
cordera.

Riu, riu chiu. He who herds by the
river:
God kept the wolf far away from our
ewe.

El lobo rabioso la quiso morder,
Mas Dios poderoso la supo defender
Quisole hazer que no pudiesse pecar,
Ni aun original esta Virgen no
tuviera.
Riu, riu...

The furious wolf attempted to bite
her, but almighty God protected her
well;
Such did he make her she could
know no sin,
A Virgin unstained by our first
father's fault.
Riu, riu...

Este qu'es nascido es el gran
monarca,
Cristo patriarca de carne vestido;
Hanos redimido con se hazer
chiquito,
Aunqu-era infinito, finito se hizera.
Riu, riu...

The newborn child is the mightiest
monarch,
Christ patriarchal invested with
flesh.
He made himself tiny and so
redeemed us,
He who was infinite became finite.
Riu, riu...

Muchas profecias lo han profetizado,
Y aun en nuestros dias lo hemos
alcancado.
A Dios humanado vemos en el suelo
Y al hombre nel cielo porqu-er le
quisiera.
Riu, riu...

Many a prophecy told of his coming,
And now in our days have we seen
them fulfilled.
God became man, on earth we
behold him,
And see man in heaven because he
so willed.
Riu, riu...

Program

Coventry Carol arr. Tim Harrison
a very dark text about King Herod's atrocities, in a setting reminiscent of the "Arabian Dance" (the one with the goldfish) from *The Nutcracker Suite*

Friday and Sunday:

Blue Grass, White Snow Patty Loveless
music by We3, whose schedule you will find elsewhere in this program

Saturday:

In The Bleak Midwinter Gustav Holst, arr. Alissa Plant
The Virgin Mary Had a Baby Boy arr. Stephen Hatfield
music by Marmalade: Donna Bowers, Kim Hollich, Lori McCarty,
Alissa Plant and Arleen Shulman

Have Yourself a Merry Little Christmas arr. Anita Kerr
a Christmas staple, stuffed with a gooey filling of all of the carols we missed

Christmas Party arr. Aden Lewis and Jack Platt
a Pennsylvania Dutch folk tune adapted into an additive carol
like the *Twelve Days of Christmas*
Susan Johnson, Paulette Matthews, Russell Matthews and Nathan Crowther, solos

The Cumberland Singers

Sopranos

Annetta Bean
Amy Braun
Ann Hearn
Kim Hollich
Stephanie Hoot
Anmarie Jezorski
Susan Johnson
Miriam McMechen
Karen Vittone
Judy Wiley



Altos

Christine Burhans
Connie Burkett
Sharon Griggs
Nancy Hanshaw
Barbara Horn
Kathleen Kline
Judi Koppenhaver
Sharon Leitch
Sandra Loyer
Paulette Matthews
Tina Moyer
Alissa Plant
Tina Stauffer
Linda Tschopp

Tenors

Don Allan
Frank Fisher
Ron Flory
Tom Longenecker
Russell Matthews

Basses

Nathan Crowther
John Mengel
Sandi Ritter-Butz
John Succa



Thank you for sharing this evening
of choral music with the
Cumberland Singers. Please join us
for a reception after the concert.



Board of Directors

John Mengel, President
Susan Johnson, Vice President
Anmarie Jezorski, Secretary
Judi Koppenhaver, Treasurer

Program

Riu, Riu, Chiu ed. Noah Greenberg
a 16th-century Spanish Christmas carol
Nathan Crowther, solo

The Last Words of David Randall Thompson
a setting of II Samuel 23:3-4, dedicated to Dr. Serge Koussevitzky for his
25th anniversary with the Boston Symphony Orchestra

Psallite Michael Praetorius
a *macoronic* (“two languages”) carol by Michael Schultheiss, whose name
was Latinized to Praetorius in an act of German insecurity

The Lamb John Tavener
a modern treatment, alternating angular and lovely moments, of a very
sweet text by William Blake

Sing We Now of Christmas arr. Cary Ratcliff
our title track, a modern treatment of a French folk carol

What is This Fragrance arr. Dale Warland
another French carol, also sung in English

Good King Wenceslas arr. David Willcocks
a touching tale of charity set to a melody from *Piae Cantiones*
Ron Flory and Steph Hoot, solos

Christmas Bells arr. John Rutter
a Norwegian carol, sung in, yes, English
Anmarie Jezorski, Kim Hollich and Linda Tschopp, solos

Program

Blow, Blow, Thou Winter Wind arr. John Rutter
a Shakespeare text from *As You Like It*, sung in French (just kidding)

Dance of the Sugar Plum Fairy arr. Jeff Funk
a remarkably faithful transcription of a piece from the *Nutcracker Suite*
Women's ensemble

The Glory Manger arr. Robert DeCormier
a Christmas spiritual, arranged for the 25th anniversary of the Vermont
ACDA Madrigal Festival

Intermission



Joy To the World Kirby Shaw
a new setting of the Isaac Watts text, with some familiar musical quotes

Ose Shalom John Leavitt
a modern setting of a traditional Hebrew text
Kim Hollich, solo
Paulette Matthews, violin

As Joseph Was A-Walking arr. Michael Scott
an Appalachian spiritual, putting forth an interesting theory of how Joseph
learned of his young bride's impending labor and delivery
Ron Flory and Tina Moyer, solos
Russell Matthews, guitar; Paulette Matthews and Lindy Mack, violin